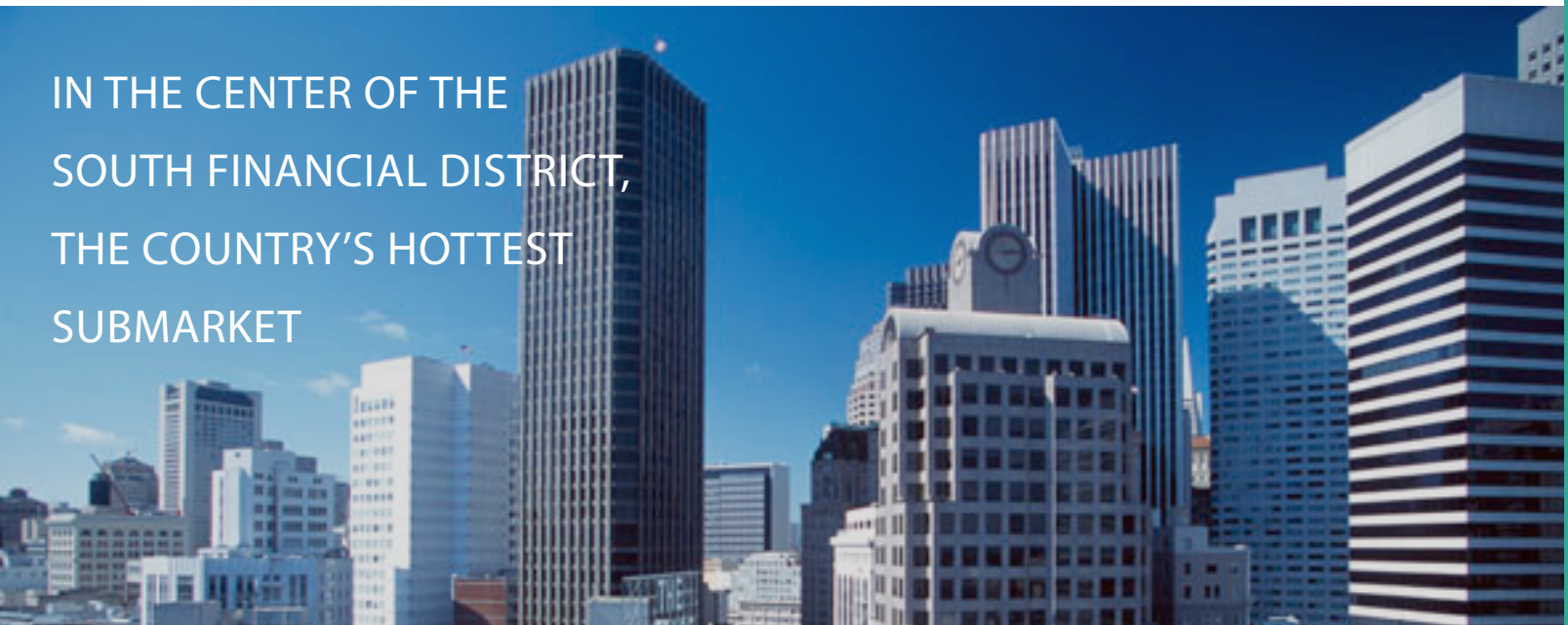




NEW MONTGOMERY



IN THE CENTER OF THE
SOUTH FINANCIAL DISTRICT,
THE COUNTRY'S HOTTEST
SUBMARKET





NEW MONTGOMERY



EASY ACCESS TO PUBLIC
TRANSPORTATION/HIGHWAYS AND
IN WALKING DISTANCE TO THE BEST
OF SAN FRANCISCO

FEATURES

- Class A South Financial District office building
- 1 block from Montgomery Street BART station
- Close proximity to Yerba Buena Gardens, Metreon, Westfield and new office developments near Second and Mission
- On-site management
- Smaller floor plates ideal for small user identity

SPACE AVAILABLE

Suite	S.F.	Rental Rate	Date Avail.	Term
412	1,951	Call	10/1/2017	Neg
500	9,137	Call	Now	Neg
1015	2,689	Call	2/1/2018	Neg
1410	2,833	Call	Now	Neg

CONTACT

Steven A. Anderson
 Managing Director
 +1 415 395 7265
 steve.anderson@am.jll.com
 License #: 00869389

Tom Doupe
 Vice President
 +1 415 395 4933
 tom.doupe@am.jll.com
 License #: 01921218

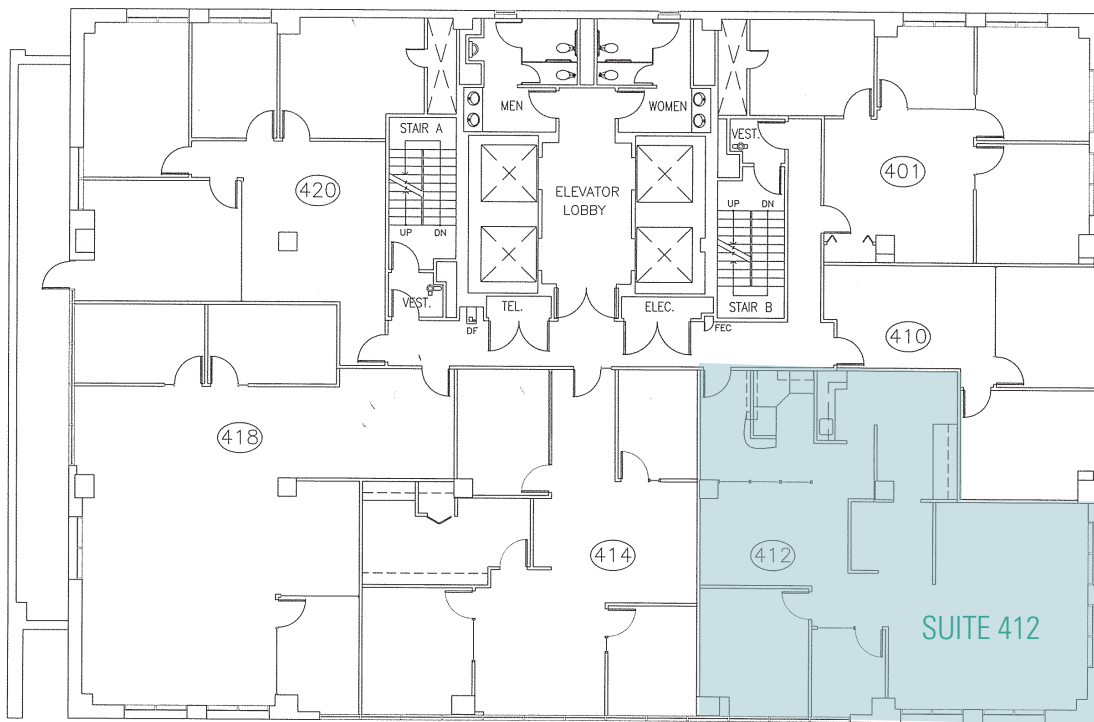




NEW MONTGOMERY

SUITE 412 1,951 SQUARE FEET

- AVAILABLE OCTOBER 1, 2017
- EFFICIENT CORNER SUITE
- 2 PRIVATE OFFICES
- KITCHEN
- RECEPTION AREA



MISSION STREET

NEW MONTGOMERY STREET

CONTACT

Steven A. Anderson
Managing Director
+1 415 395 7265
steve.anderson@am.jll.com
License #: 00869389

Tom Doupe
Vice President
+1 415 395 4933
tom.doupe@am.jll.com
License #: 01921218

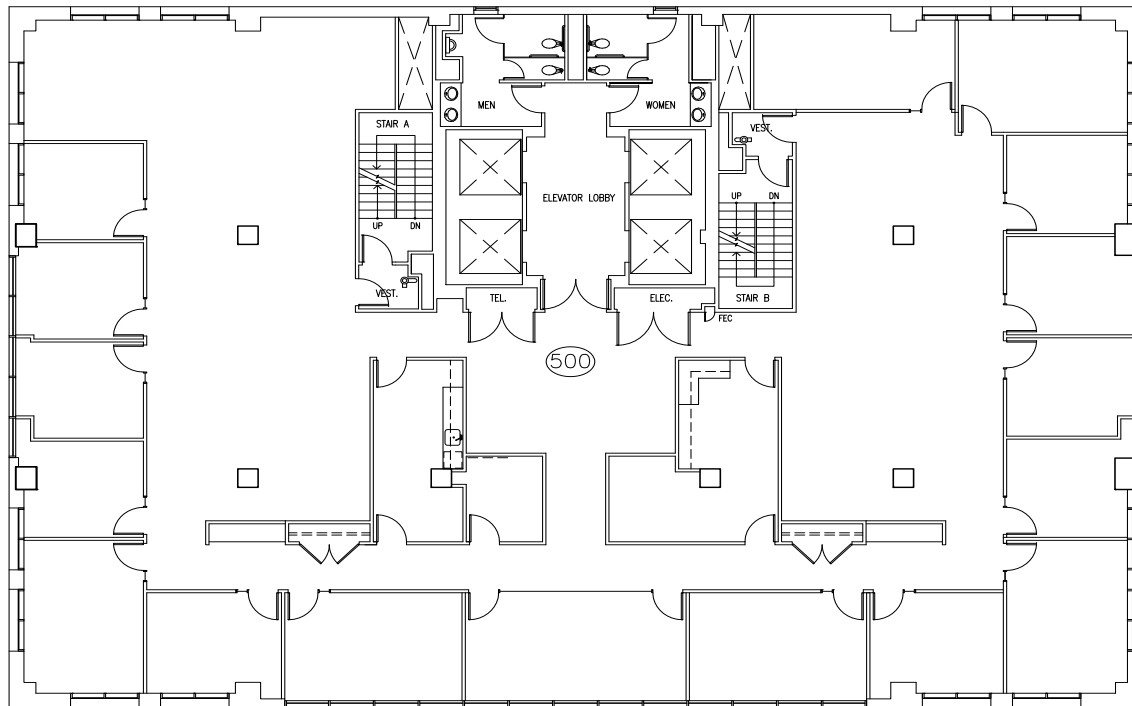




NEW MONTGOMERY

SUITE 500 9,137 SQUARE FEET

- FULL FLOOR OPPORTUNITY
- 17 PRIVATE OFFICES
- 1 CONFERENCE ROOM
- KITCHEN
- STORAGE
- PRODUCTION ROOM



NEW MONTGOMERY STREET

MISSION STREET

CONTACT

Steven A. Anderson
Managing Director
+1 415 395 7265
steve.anderson@am.jll.com
License #: 00869389

Tom Doupe
Vice President
+1 415 395 4933
tom.doupe@am.jll.com
License #: 01921218

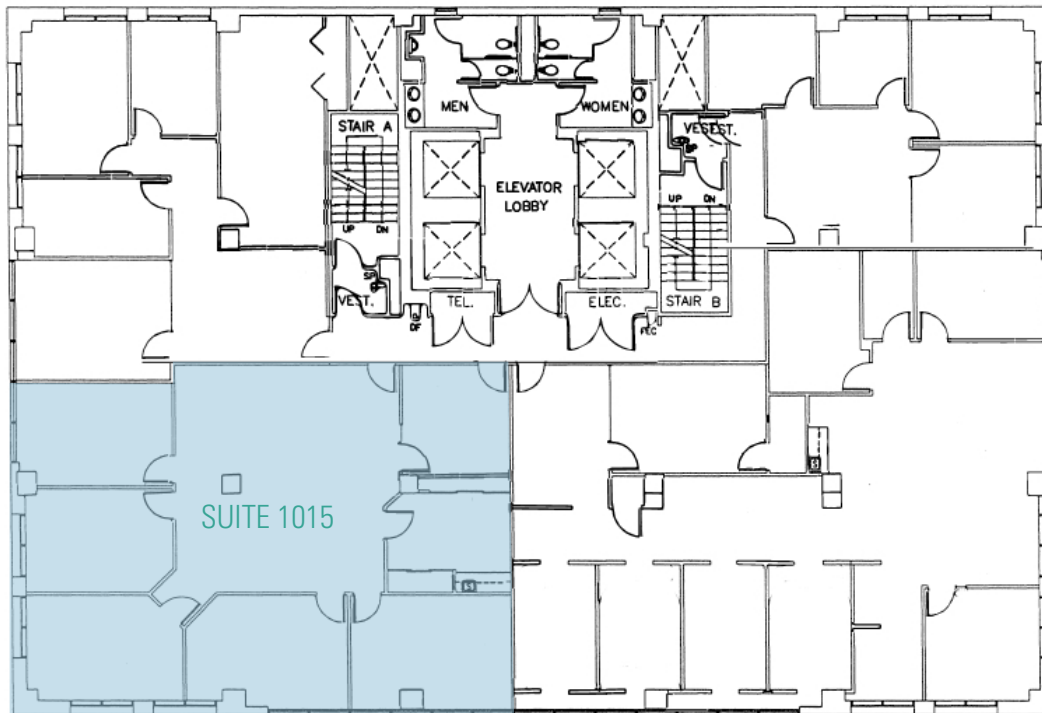




NEW MONTGOMERY

SUITE 1015 2,689 SQUARE FEET

- AVAILABLE FEBRUARY 1, 2018
- 6 PRIVATE OFFICES/MEETING ROOMS
- KITCHEN
- STORAGE AREA
- FLOOR-TO-CEILING GLASS WITH SOUTHWESTERN FACING VIEWS



NEW MONTGOMERY STREET

MISSION STREET

CONTACT

Steven A. Anderson
Managing Director
+1 415 395 7265
steve.anderson@am.jll.com
License #: 00869389

Tom Doupe
Vice President
+1 415 395 4933
tom.doupe@am.jll.com
License #: 01921218

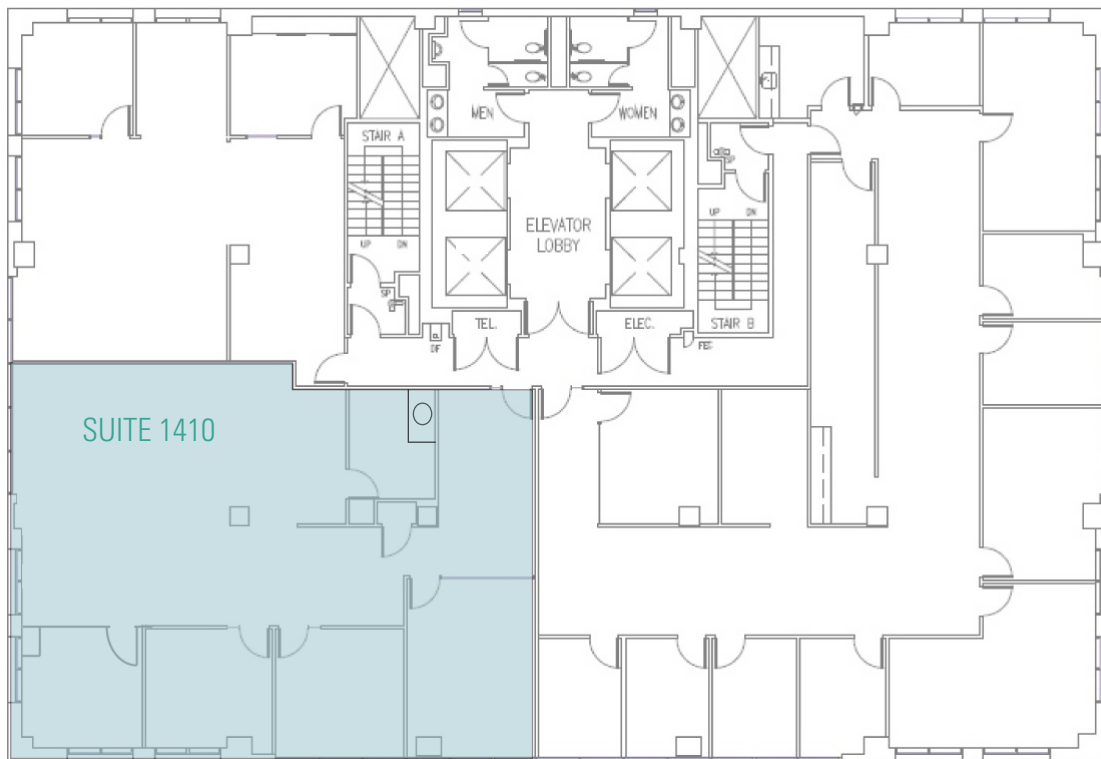




NEW MONTGOMERY

SUITE 1410 2,833 SQUARE FEET

- HIGH-END RECEPTION
- FLOOR-TO-CEILING GLASS
- KITCHEN
- OPEN AREA
- 3 PRIVATE OFFICES
- 1 CONFERENCE ROOM



MISSION STREET

NEW MONTGOMERY STREET

CONTACT

Steven A. Anderson
Managing Director
+1 415 395 7265
steve.anderson@am.jll.com
License #: 00869389

Tom Doupe
Vice President
+1 415 395 4933
tom.doupe@am.jll.com
License #: 01921218

